

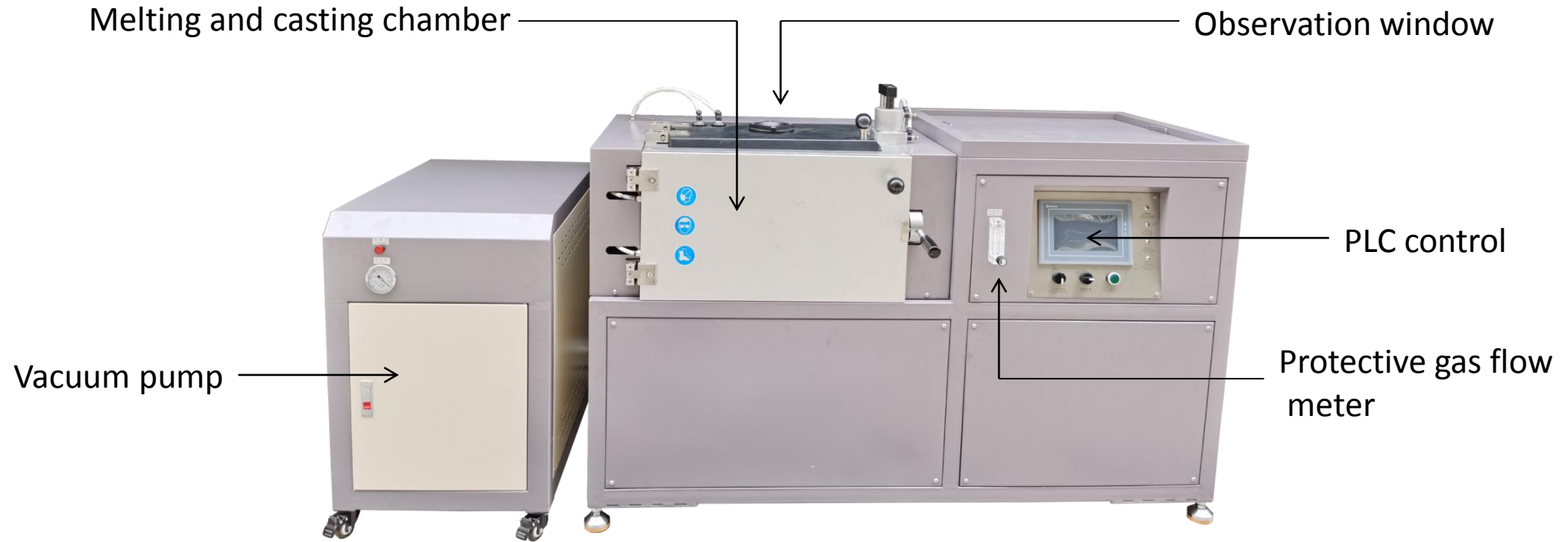
SMALL 1KG GOLD BULLION VACUUM CASTING MACHINE

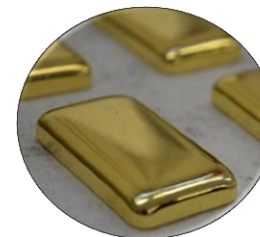
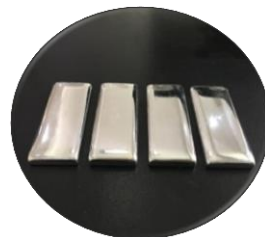
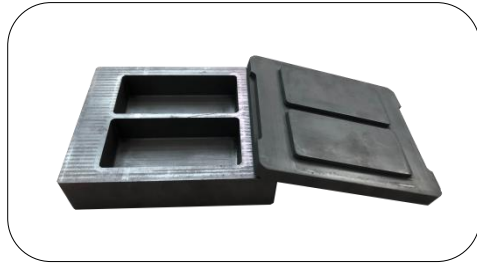


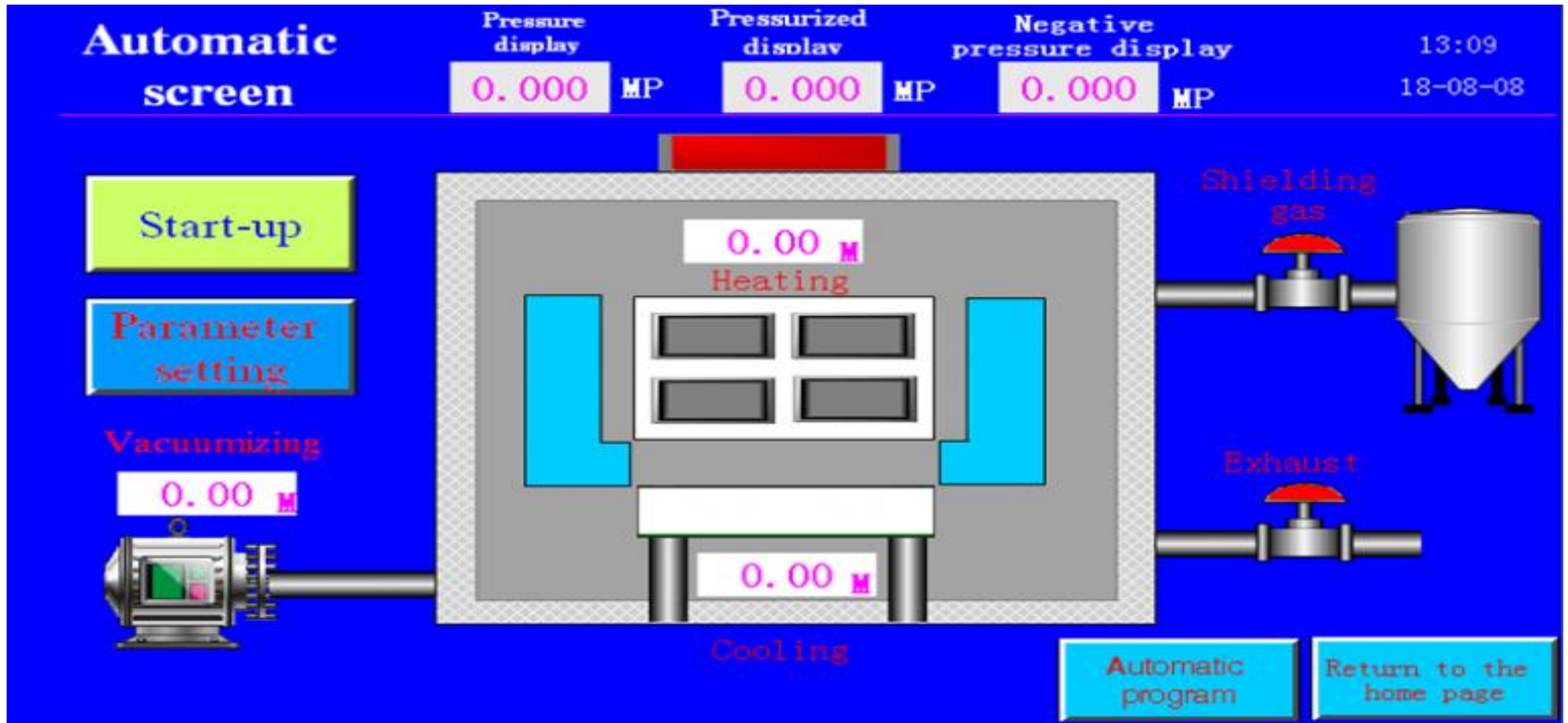
SMALL 1KG GOLD BULLION VACUUM CASTING MACHINE











Parameter

Model number	CDO-F2	CDO-F2	CDO-F4
Power source	Three phase 380V±10%, 50/60Hz	Three phase 380V±10%, 50/60Hz	Three phase 380V±10%,50/60Hz
Power	35 kw	35 kw	45 kw
Control system	PLC/Manual	PLC/Manual	PLC/Manual
Applicable metal	Gold and silver	Gold and silver	Gold and silver
Casting time	About 15 min	About 15 min	About 13 min
The Max capacity	2 pcs of 4kg bar or 10kg bar	2 pcs of 4kg bar or 10kg bar	4 pcs of 1kg bar or 15kg bar
Dimension	1400*700*1200 mm	1400*700*1200 mm	1600*700*1200 mm
Weight	210 kg	210 kg	230 kg
Protective gas	Nitrogen or argon	Nitrogen or argon	Nitrogen or argon
Vacuum pump	63 m³/hour	63 m³/hour	63 m³/hour
Heating technology	Induction heating	Induction heating	Induction heating
Casting mode	Auto and manual mode switch	Auto and manual mode switch	Auto and manual mode switch

Features

- 1: IGBT technology based induction heating, which can continuously working for 24 hrs.
- 2: PLC control system, automated spreading, hassle-free procedure, liberation of workforce.
- 3: Fairly smooth bar surface which can improve your business competitiveness, and increase your business profit.
- 4: Types sizes of bar can be customized designed, like 50g, 100g, 100oz, 1000g, etc, can meet different client requirement.
- 5: Special square shape design induction coil which is 100% match the graphite mold, so can guarantee the heating is uniform, and the bullion surface is most smooth.
- 6: Automatic Pneumatic jack will lift the graphite mould up perfectly into the center of the electromagnetic field as well as the melting step will start.

Application

